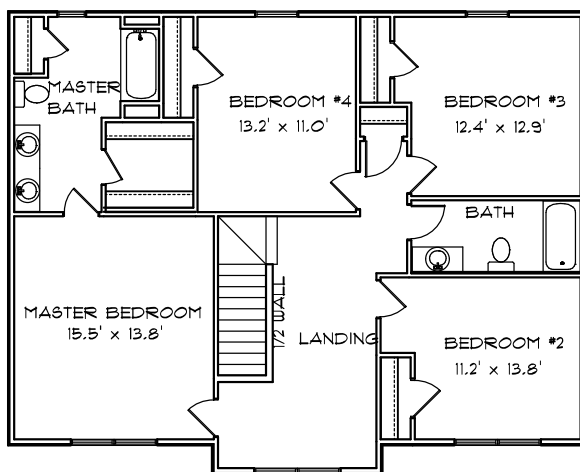
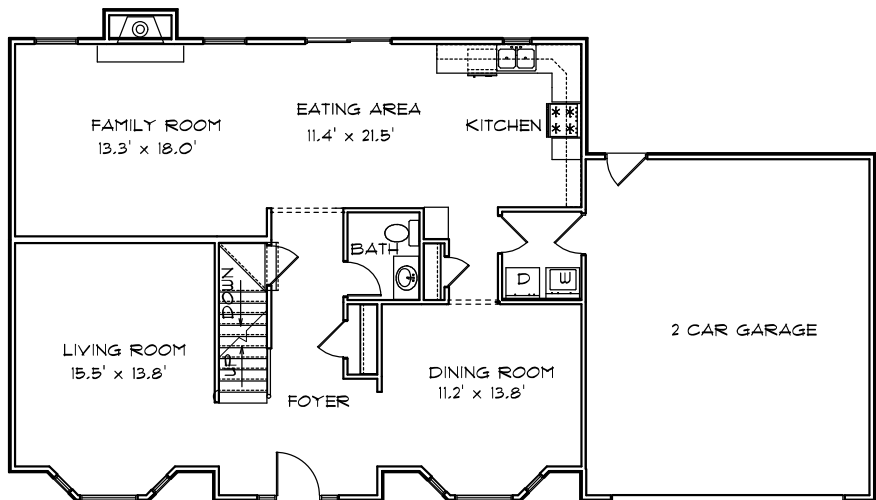


# CONTRY HOMES

## THE 2400 TWO STORY F2 WITH BAYS



### FEATURES:

- |                           |                          |
|---------------------------|--------------------------|
| 2400 Sq. Ft. Living Area  | 4 Bedrooms               |
| Formal Dining Room        | 2 1/2 Baths              |
| Energy Efficient          | Family Room w/ Fireplace |
| Finished Flooring         | Range and Dishwasher     |
| Attached 2 Car Garage *   | Main Floor Laundry       |
| * Optional 3rd Car Garage | Oak Cabinets & Vanities  |

**JOE CONTARINO**  
 Broker Associate  
 Dickerson & Nieman-Realtors  
 Office (815) 399-8100  
 Email: [info@contryhomes.com](mailto:info@contryhomes.com)  
 Web: [www.contryhomes.com](http://www.contryhomes.com)

\* All Dimensions are Approximate \*

\* Note: All elevations are representative only and subject to change without notice. Consult a Contry Homes representative for details.

June 06, 2005