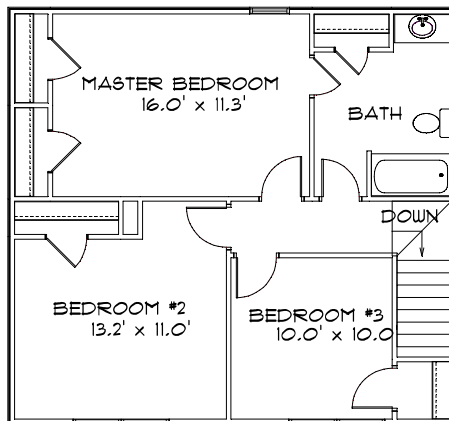
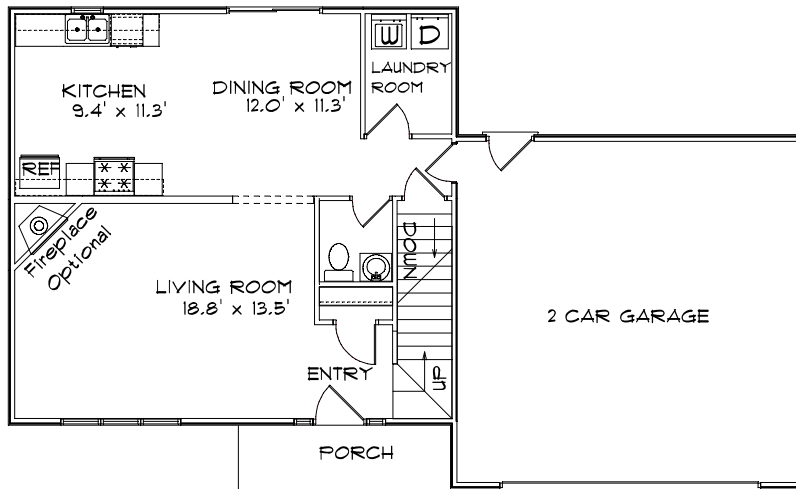


CONTRY HOMES

THE 1456 TWO STORY B2



FEATURES:

- 1456 Sq. Ft. Living Area
- Attached 2 Car Garage *
- * Optional 3rd Car Garage
- Energy Efficient
- Range and Dishwasher
- Oak Cabinets & Vanities
- Main Floor Laundry
- Finished Flooring
- 3 Bedroom
- Optional: 2 1/2 Baths
- Fire Place

JOE CONTARINO
 Broker Associate
 Dickerson & Nieman-Realtors
 Office (815) 399-8100
 Email: info@contryhomes.com
 Web: www.contryhomes.com

- * All Dimensions are Approximate *
- * Note: All elevations are representative only and subject to change without notice. Consult a Contry Homes representative for details.

January 11, 2005