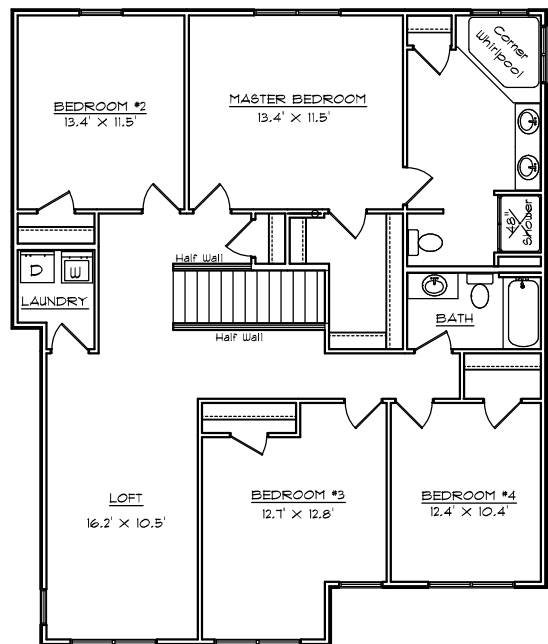
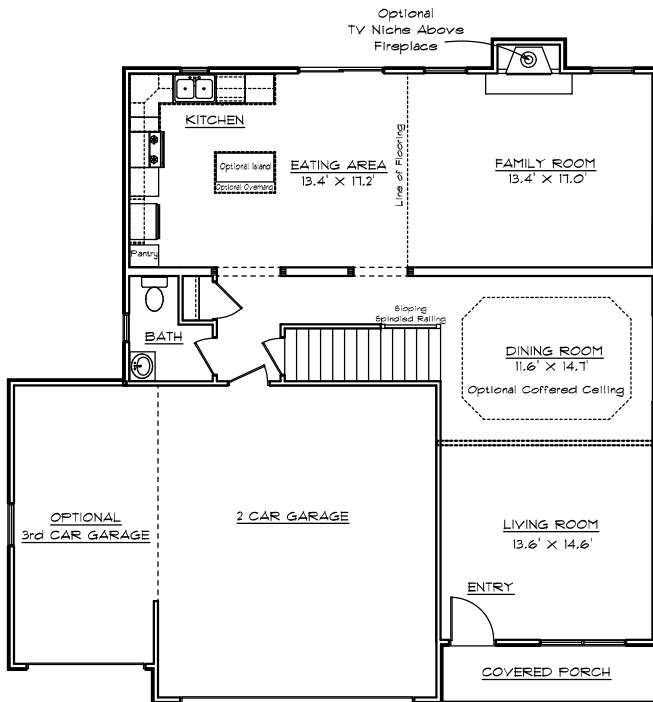


CONTRY HOMES

THE 2638 A TWO STORY



FEATURES:

- | | |
|------------------------------|-----------------------------|
| 2638 Sq. Ft. Living Area | 4 Bedrooms |
| Formal Dining Room | 2 1/2 Baths |
| W/ Optional Coffered Ceiling | Whirlpool in Master Bath |
| Energy Efficient | Range and Dishwasher |
| Finished Flooring | Family Room W/ Fireplace |
| Attached 2 Car Garage * | Oak Cabinets & Vanities |
| * Optional 3rd Car Garage | *NO Optional Bay in Kitchen |

* All Dimensions are Approximate *

* Note: All elevations are representative only and subject to change without notice. Consult a Contry Homes representative for details.

JOE CONTARINO
 Broker Associate
 Dickerson & Nieman-Realtors
 Office (815) 399-8100
 Email: info@contryhomes.com
 Web: www.contryhomes.com

March 14, 2007