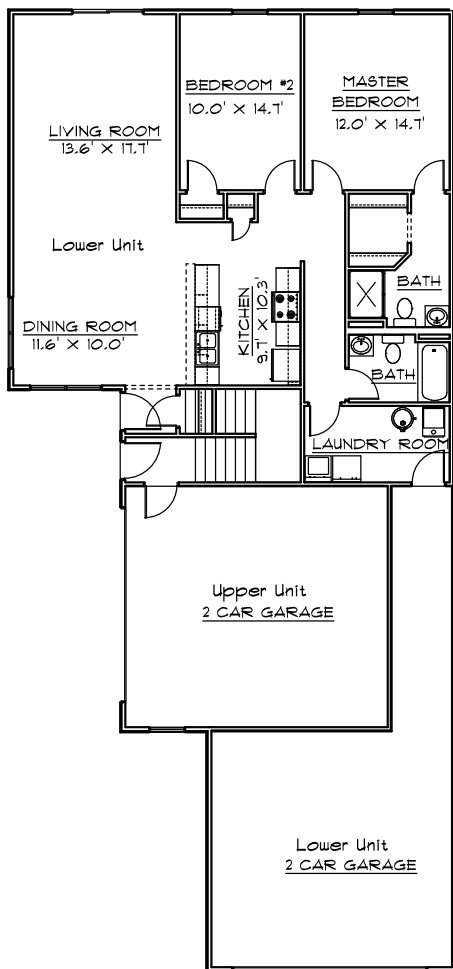


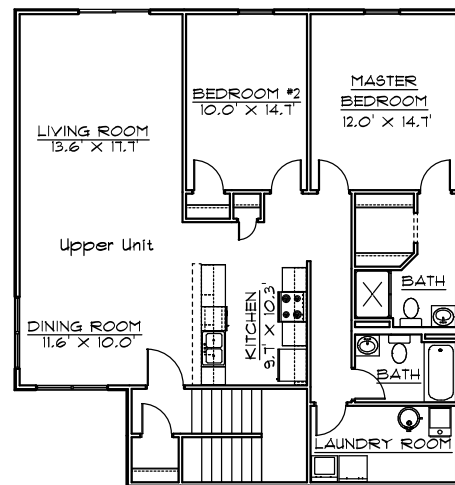
CLEARWING DEVELOPMENT LLC, THE CLEARWING CONDO



Lower Unit & Garage Layouts

FEATURES:

- 1280 Sq. Ft. Living Area
- Range, Dishwasher, Microwave, Refrigerator, Washer, & Dryer
- 9' Ceilings In 1st Floor Units
- Formal Dining Room
- Energy Efficient
- Living Room W/ Cathedral Ceiling in Upper Units
- 2 Bedrooms
- 1 3/4 Baths
- Laundry Room
- 90% Furnace With Central Air
- Attached 2 Car Garage
- Oak Cabinets & Vanities
- Finished Flooring



Upper Unit Layout

JOE CONTARINO
Broker Associate
Dickerson & Nieman-Realtors
Office (815) 399-8100
Email: info@contryhomes.com
Web: www.contryhomes.com

* All Dimensions are Approximate *

* Note: All elevations are representative only and subject to change without notice. Consult your representative for details.

March 03, 2006