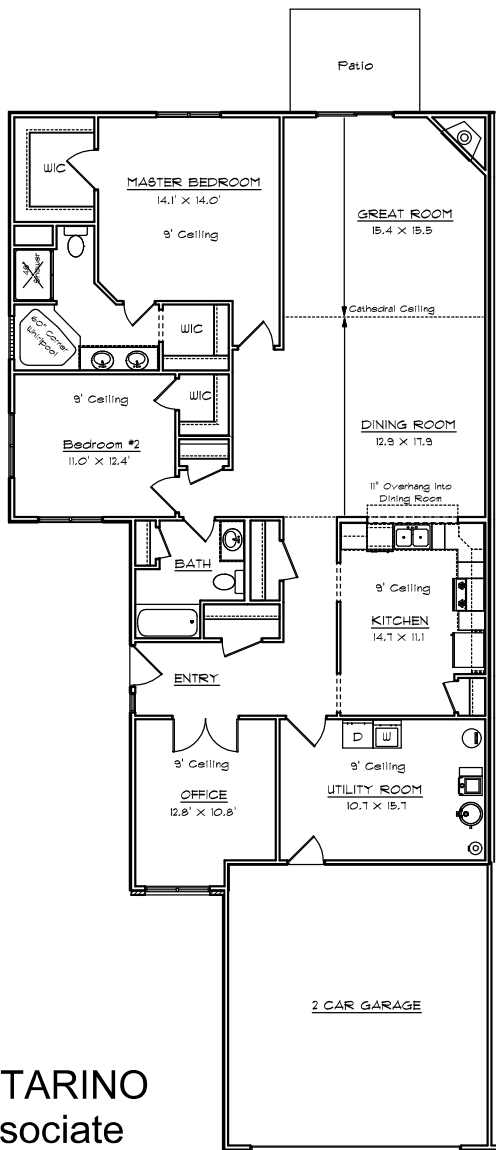


# CONTRY HOMES THE CLEARWING DUPLEX



## FEATURES:

- 1923 Sq. Ft. Living Area
- Range, Dishwasher, & Microwave
- 9' Ceilings
- Formal Dining Room
- Energy Efficient
- Great Room w/ Cathedral Ceiling
- 2 Bedrooms
- 2 Baths
- Office
- Laundry Room
- 90% Furnace With Central Air
- Attached 2 Car Garage  
With Opener
- Oak Cabinets & Vanities
- Finished Flooring

JOE CONTARINO  
Broker Associate  
Dickerson & Nieman-Realtors  
Office (815) 399-8100  
Email: [info@contryhomes.com](mailto:info@contryhomes.com)  
Web: [www.contryhomes.com](http://www.contryhomes.com)

\* All Dimensions are Approximate \*

\* Note: All elevations are representative only and subject to change without notice. Consult your representative for details.

November 21, 2006