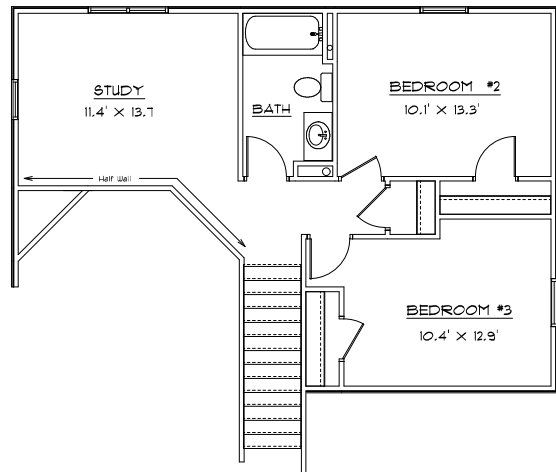
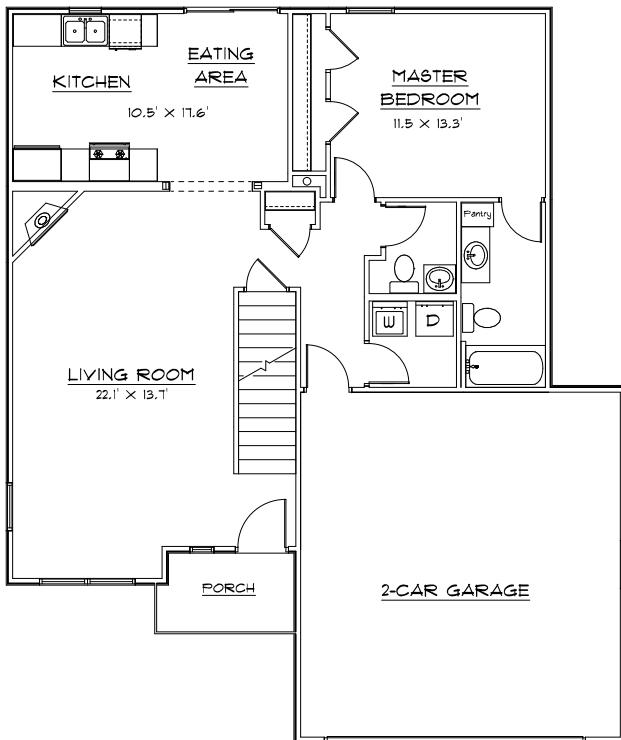


CONTRY HOMES

THE 1632 MOD 2-Story



FEATURES:

- 1632 Sq. Ft. Living Area
- Energy Efficient
- Finished Flooring
- *Optional 3rd Car Garage
- Second Floor Loft
- 3 Bedroom
- 2.5 Baths
- Family Room w/ Fireplace
- Range and Dishwasher
- First Floor Laundry
- Oak Cabinets & Vanities
- Main Floor Master Bath
- Vaulted Ceiling & Fireplace

* All Dimensions are Approximate *

* Note: All elevations are representative only and subject to change without notice. Consult a Contry Homes representative for details.

JOE CONTARINO
 Broker Associate
 Dickerson & Nieman-Realtors
 Office (815) 399-8100
 Email: info@contryhomes.com
 Web: www.contryhomes.com

December 22, 2006