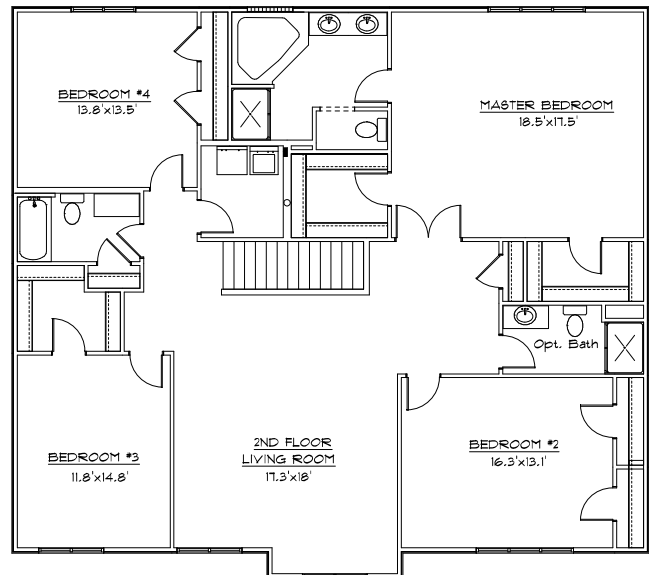
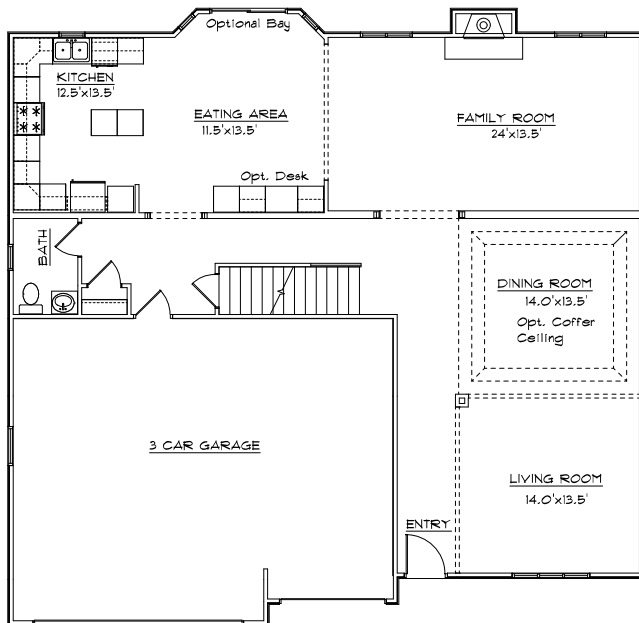


CONTRY HOMES

THE PRESERVE 3630 G Mod



FEATURES:

- | | |
|--|---------------------------------------|
| 3630 Sq. Ft. Living Area | 4 Bedrooms |
| Formal Dining Room | 2 1/2 Baths |
| Energy Efficient | Family Room W/ Fireplace |
| Finished Flooring | Range and Dishwasher |
| Attached 3 Car Garage | Second Floor Laundry |
| 2nd Floor Living Room | Oak Cabinets & Vanities |
| Optional Coffered Ceiling in Dining Room | Optional Full Bath added to 2nd Floor |

* All Dimensions are Approximate *

* Note: All elevations are representative only and subject to change without notice. Consult a Contry Homes representative for details.

JOE CONTARINO
 Broker Associate
 Dickerson & Nieman-Realtors
 Office (815) 399-8100
 Email: info@contryhomes.com
 Web: www.contryhomes.com

September 01, 2006