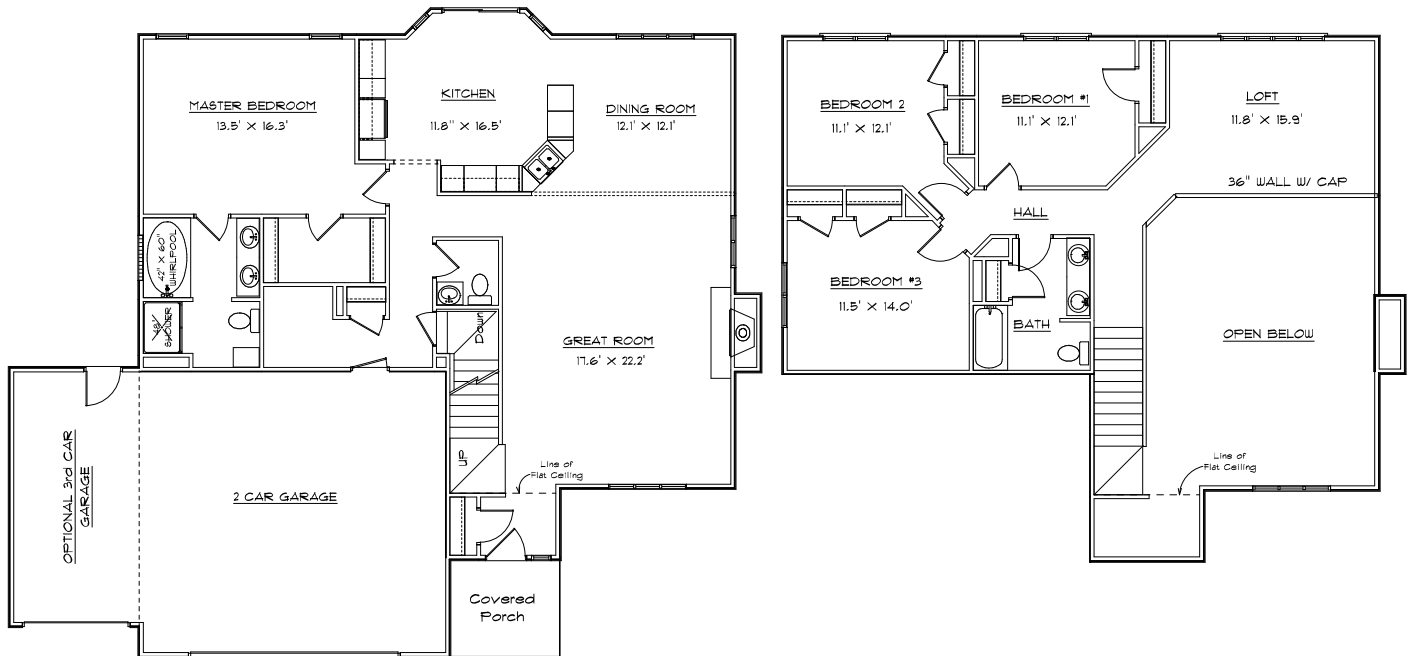


# CONTRY HOMES

## THE PRESERVE 2410 MODEL



OPTIONAL 3rd CAR GARAGE



### FEATURES:

- |                           |                         |
|---------------------------|-------------------------|
| 2410 Sq. Ft. Living Area  | 2 1/2 Bath              |
| Formal Dining Room        | Greatroom w/ Fireplace  |
| Energy Efficient          | Range and Dishwasher    |
| Finished Flooring         | Main Floor Laundry      |
| Attached 2 Car Garage *   | Oak Cabinets & Vanities |
| * Optional 3rd Car Garage |                         |
| 4 Bedroom                 |                         |

\* All Dimensions are Approximate \*

\* Note: All elevations are representative only and subject to change without notice. Consult a Contry Homes representative for details.

**JOE CONTARINO**  
 Broker Associate  
 Dickerson & Nieman-Realtors  
 Office (815) 399-8100  
 Email: [info@contryhomes.com](mailto:info@contryhomes.com)  
 Web: [www.contryhomes.com](http://www.contryhomes.com)

March 14, 2006