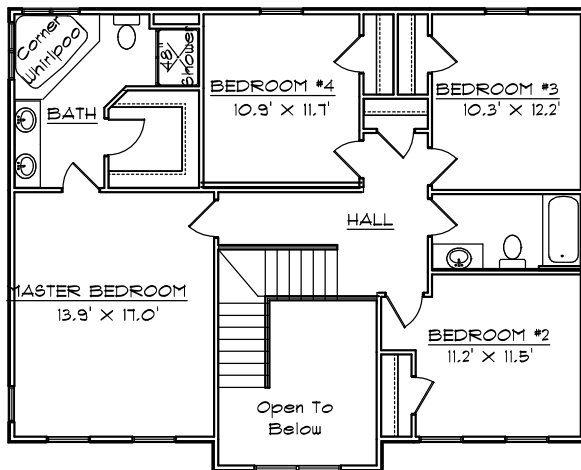
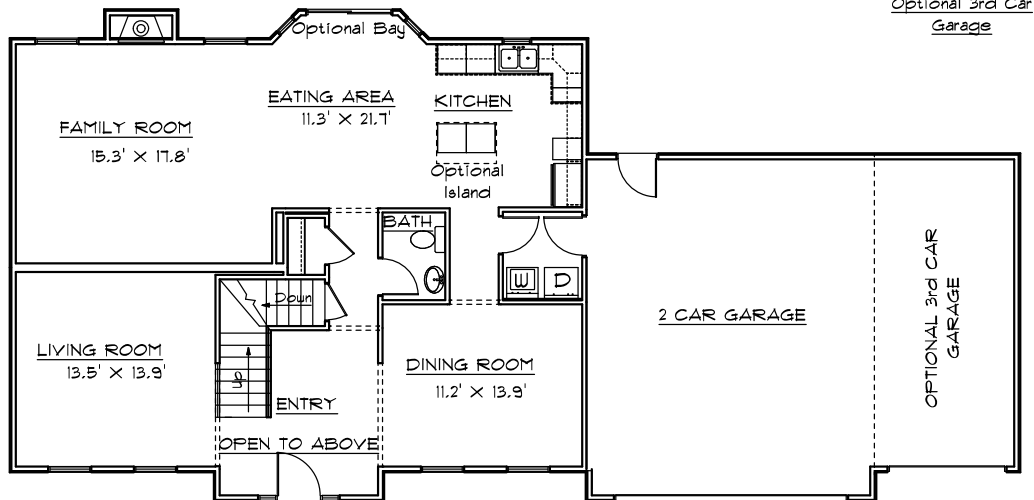


# CONTRY HOMES

## THE PRESERVE 2400 F OPEN FOYER



### FEATURES:

- 2400 Sq. Ft. Living Area
- 9' 1st Floor Ceilings
- 8' 2nd Floor Ceilings
- Two Story Open Foyer
- Formal Dining Room
- Energy Efficient
- Finished Flooring
- Attached 2 Car Garage \*
- \* Optional 3rd Car Garage
- 4 Bedrooms
- 2 1/2 Baths
- Family Room w/ Fireplace
- Range and Dishwasher
- Main Floor Laundry
- Oak Cabinets & Vanities

**JOE CONTARINO**  
 Broker Associate  
 Dickerson & Nieman-Realtors  
 Office (815) 399-8100  
 Email: [info@contryhomes.com](mailto:info@contryhomes.com)  
 Web: [www.contryhomes.com](http://www.contryhomes.com)

\* All Dimensions are Approximate \*

\* Note: All elevations are representative only and subject to change without notice. Consult a Contry Homes representative for details.

March 15, 2006