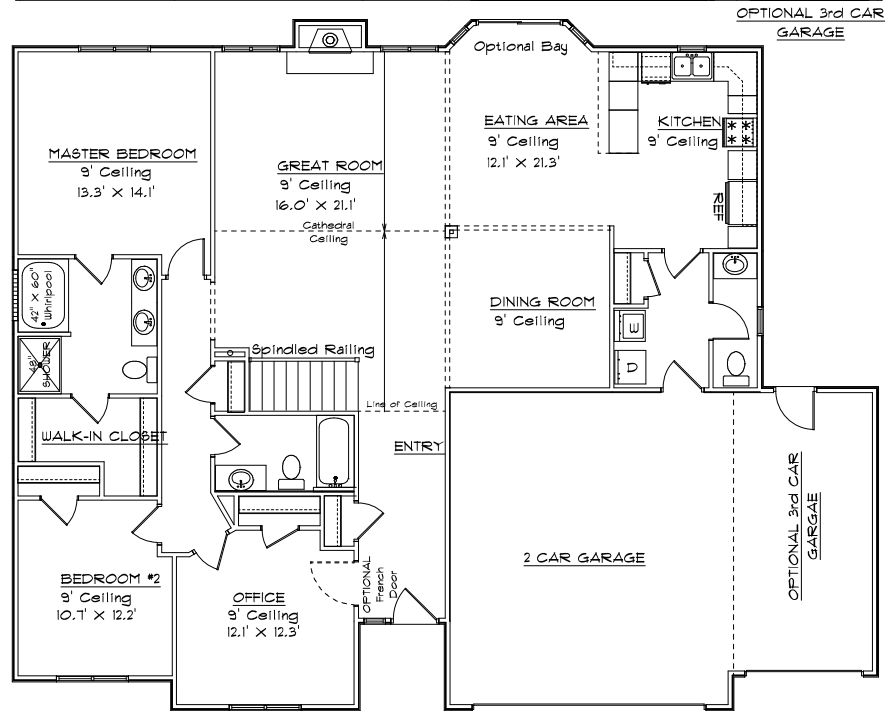


CONTRY HOMES

THE PRESERVE 1880 A MODEL



FEATURES:

- | | |
|----------------------------------------------|----------------------------------------------|
| 1880 Sq. Ft. Living Area | 2 1/2 Bath |
| Formal Dining Room | Greatroom W/ Cathedral Ceiling and Fireplace |
| Energy Efficient | Range and Dishwasher |
| Finished Flooring | Main Floor Laundry |
| Attached 2 Car Garage * | Oak Cabinets & Vanities |
| * Optional 3rd Car Garage | |
| 2 Bedroom With Optional Office / 3rd Bedroom | |

* All Dimensions are Approximate *

* Note: All elevations are representative only and subject to change without notice. Consult a Contry Homes representative for details.

JOE CONTARINO
 Broker Associate
 Dickerson & Nieman-Realtors
 Office (815) 399-8100
 Email: info@contryhomes.com
 Web: www.contryhomes.com

August 01, 2006