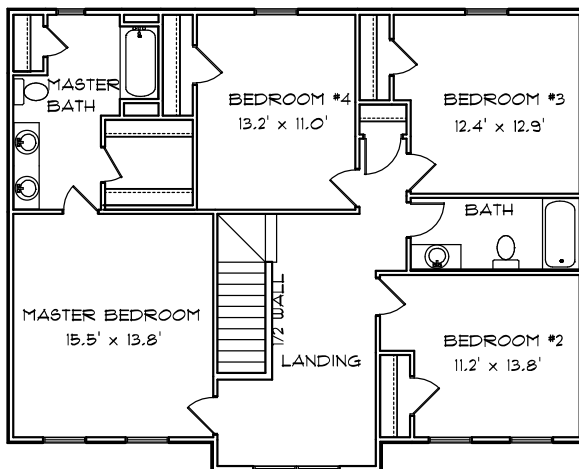
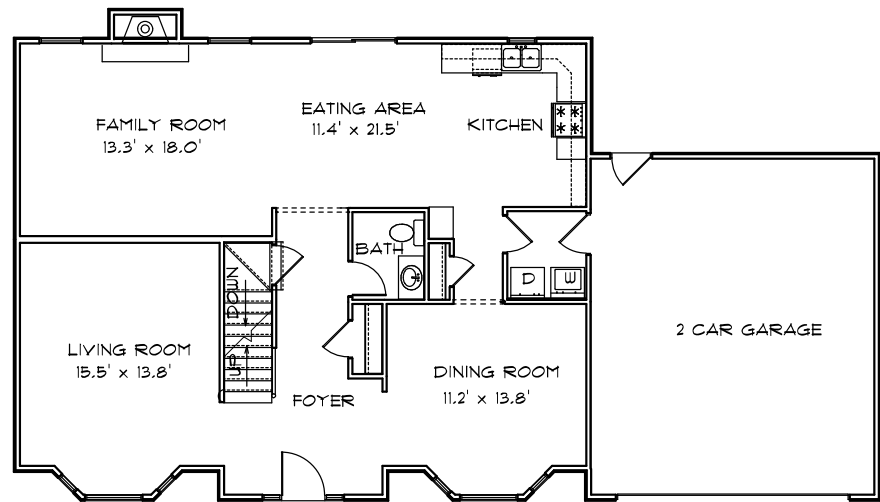


CONTRY HOMES

THE 2400 TWO STORY FI WITH BAYS



FEATURES:

- | | |
|---------------------------|--------------------------|
| 2400 Sq. Ft. Living Area | 4 Bedrooms |
| Formal Dining Room | 2 1/2 Baths |
| Energy Efficient | Family Room W/ Fireplace |
| Finished Flooring | Range and Dishwasher |
| Attached 2 Car Garage * | Main Floor Laundry |
| * Optional 3rd Car Garage | Oak Cabinets & Vanities |

JOE CONTARINO
 Broker Associate
 Dickerson & Nieman-Realtors
 Office (815) 399-8100
 Email: info@contryhomes.com
 Web: www.contryhomes.com

* All Dimensions are Approximate *

* Note: All elevations are representative only and subject to change without notice. Consult a Contry Homes representative for details.

June 06, 2005