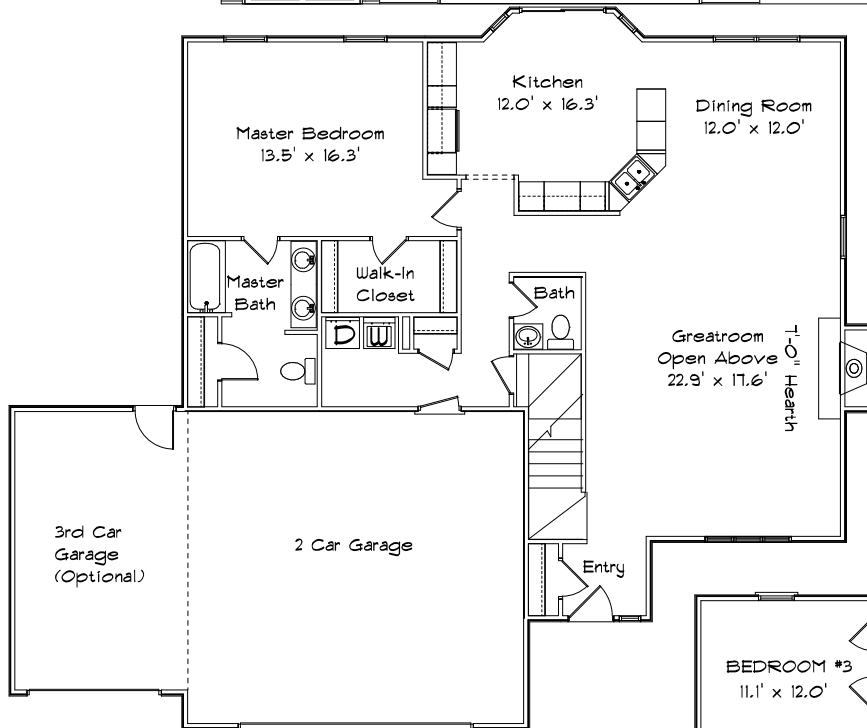


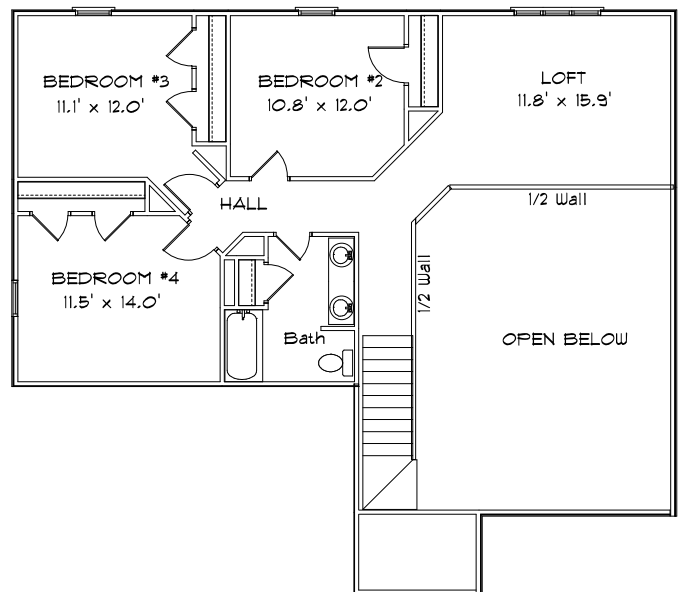
CONTRY HOMES

THE 2410 GABLE PORCH TWO STORY



FEATURES:

- 2410 Sq. Ft. Living Area
- Formal Dining Room
- Energy Efficient
- Finished Flooring
- Attached 2 Car Garage *
- * Optional 3rd Car Garage
- Main Floor Master Bedroom
- 4 Bedrooms
- 2 1/2 Baths
- Second Floor Loft
- Greatroom w/ Fireplace
- Range and Dishwasher
- Main Floor Laundry
- Oak Cabinets & Vanities



JOE CONTARINO
 Broker Associate
 Dickerson & Nieman-Realtors
 Office (815) 399-8100
 Email: info@contryhomes.com
 Web: www.contryhomes.com

* All Dimensions are Approximate *

* Note: All elevations are representative only and subject to change without notice. Consult a Contry Homes representative for details.

August 19, 2005