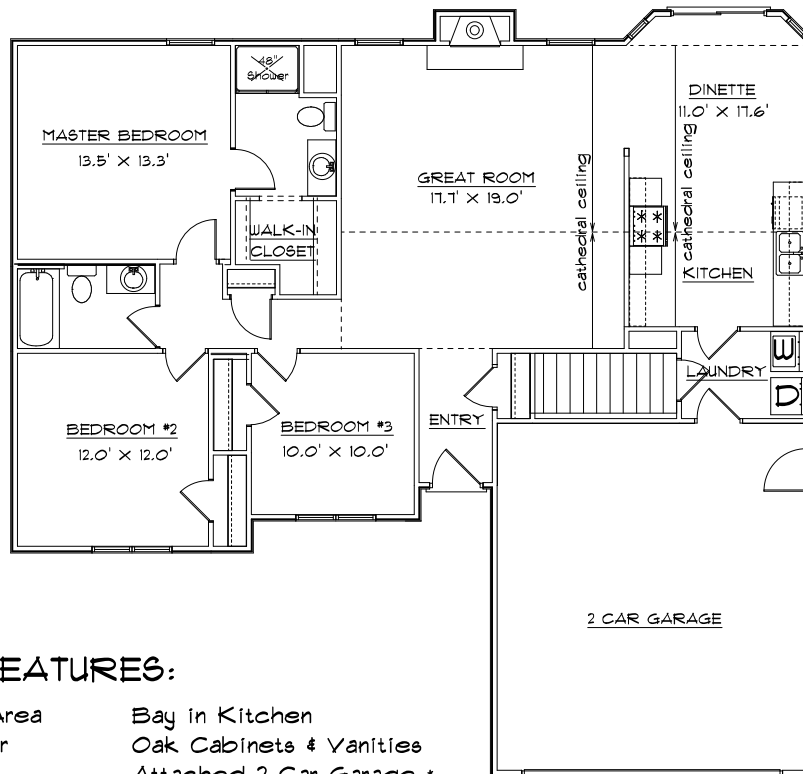


CONTRY HOMES

THE 1380 M GREATROOM W/PORCH



FEATURES:

- | | |
|--|---------------------------|
| 1380 Sq. Ft. Living Area | Bay in Kitchen |
| Range and Dishwasher | Oak Cabinets & Vanities |
| Energy Efficient | Attached 2 Car Garage * |
| Greatroom w/
Cathedral Ceiling & Fire Place | Finished Flooring |
| 3 Bedroom | Main Floor Laundry |
| 2 Baths | * Optional 3rd Car Garage |

JOE CONTARINO
 Broker Associate
 Dickerson & Nieman-Realtors
 Office (815) 399-8100
 Email: info@contryhomes.com
 Web: www.contryhomes.com

* All Dimensions are Approximate *

* Note: All elevations are representative only and subject to change without notice. Consult a Contry Homes representative for details.

August 30, 2005