

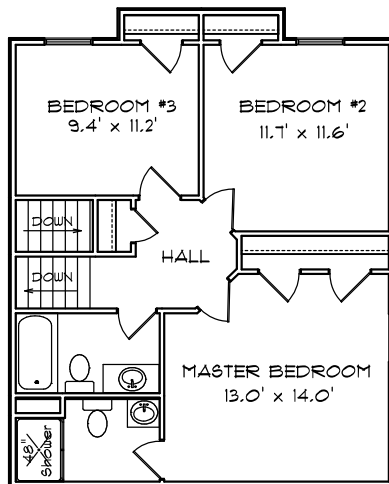
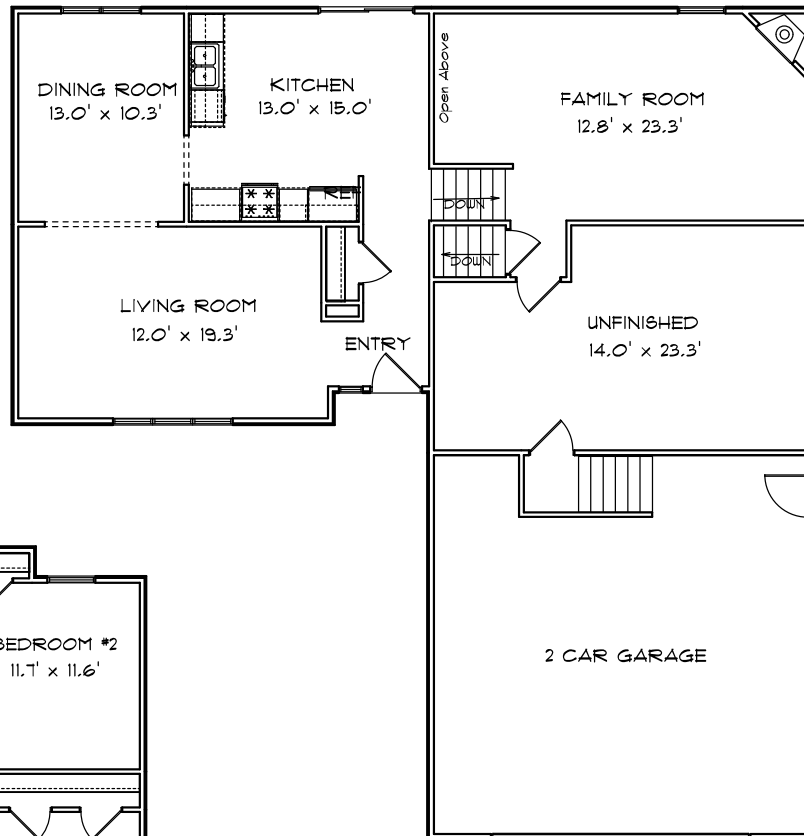
CONTRY HOMES

THE 1710 TRI-LEVEL



FEATURES:

- 1710 Sq. Ft. Living Area
- Range and Dishwasher
- Energy Efficient
- Family Room W/ Fire Place
- 3 Bedroom
- 1 3/4 Bath
- Finished Flooring
- Attached 2 Car Garage *
- * Optional 3rd Car Garage



JOE CONTARINO
 Broker Associate
 Dickerson & Nieman-Realtors
 Office (815) 399-8100
 Email: info@contryhomes.com
 Web: www.contryhomes.com

* All Dimensions are Approximate *

* Note: All elevations are representative only and subject to change without notice. Consult a Contry Homes representative for details.

August 30, 2005