

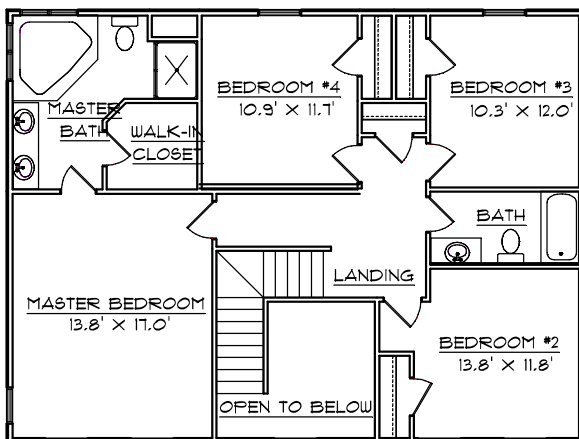
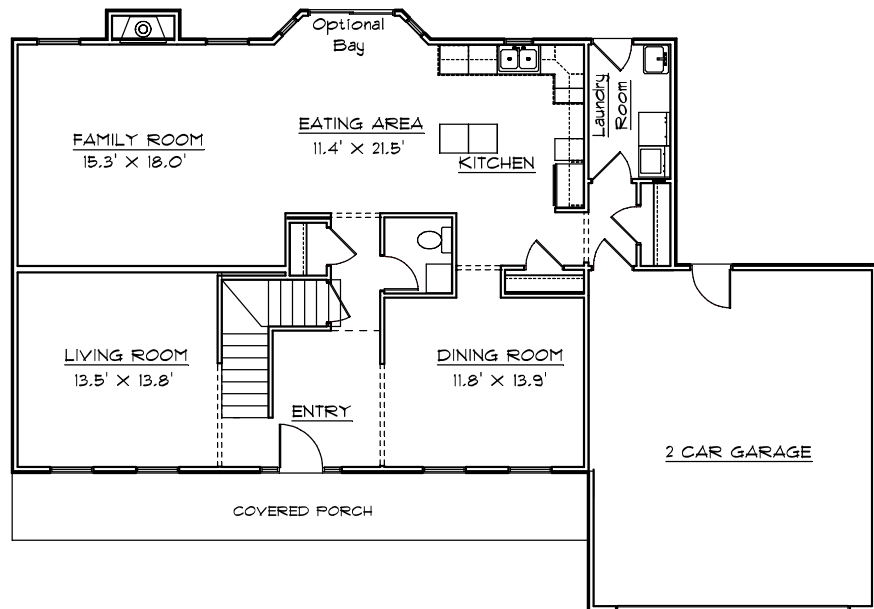
CONTRY HOMES

THE 2496 TWO STORY D



FEATURES:

- 2496 Sq. Ft. Living Area
- 9' First Floor Ceilings
- Formal Dining Room
- Energy Efficient
- Finished Flooring
- Attached 2 Car Garage *
- * Optional 3rd Car Garage
- Optional Bay In Kitchen
- 4 Bedrooms
- 2 1/2 Baths
- Whirlpool in Master Bath
- Family Room W/ Fireplace
- Main Floor Laundry
- Range and Dishwasher
- Oak Cabinets & Vanities



* All Dimensions are Approximate *

* Note: All elevations are representative only and subject to change without notice. Consult a Contry Homes representative for details.

JOE CONTARINO
 Broker Associate
 Dickerson & Nieman-Realtors
 Office (815) 399-8100
 Email: info@contryhomes.com
 Web: www.contryhomes.com

January 12, 2005