

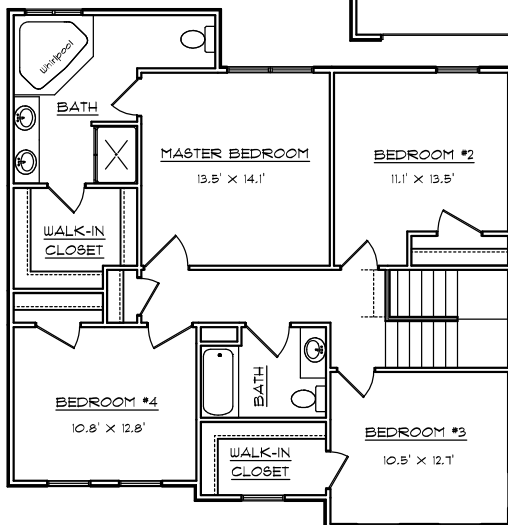
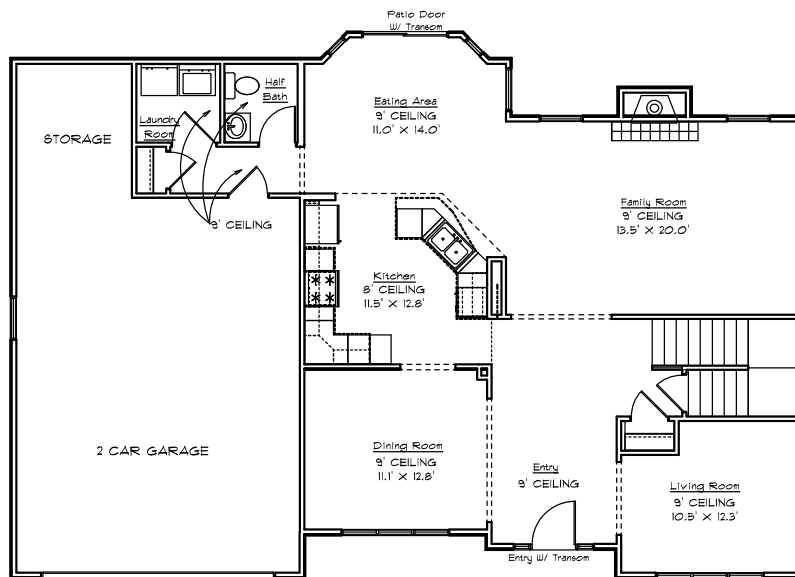
CONTRY HOMES

THE 2404 TWO STORY



FEATURES:

- 2404 Sq. Ft. Living Area
- Formal Dining Room
- Energy Efficient
- Finished Flooring
- Attached 2 Car Garage *
- * Optional 3rd Car Garage
- 9' First Floor Walls
- 8' Second Floor Walls
- 4 Bedrooms
- 2 1/2 Baths
- Family Room w/ Fireplace
- Range and Dishwasher
- Main Floor Laundry
- Oak Cabinets & Vanities



JOE CONTARINO
 Broker Associate
 Dickerson & Nieman-Realtors
 Office (815) 399-8100
 Email: info@contryhomes.com
 Web: www.contryhomes.com

* All Dimensions are Approximate *

* Note: All elevations are representative only and subject to change without notice. Consult a Contry Homes representative for details.

June 22, 2005